

Kawasaki Town Guide to Onsen Hot Springs



Wonder back
in time

History, nature, food, relaxation...

Best Spots to Visit

Traditional Japanese Inns

Yumoto Fubokaku
Sankei-no-yado Ryusen
Kanzan Chogetsu
Oyado Hanabusa
Ittou-Onsenyado Seigetsu
Hitohikari
Fubokan Okazakiryokan
Gaga Onsen

Contemporary Accommodation Experiences

AONE × MATKA
T-lodge AONE
T-lodge AONE 2 BIGFOOT
N-cabin AONE
HANABUSA DOGlamping

Take a stroll through streets steeped in history

Journey through Aone Onsen

Aone Onsen, with a history of over 490 years, is the perfect place to take a leisurely stroll through nostalgic streets and unwind in natural hot spring waters. Here, you can leave behind the stress of everyday life and immerse yourself in deep relaxation.



Recommended
History

Inspiring a Young Composer for a Famous Song

In 1928, the young composer Masao Koga stayed here, an experience later materialized as the famous song “Kage-o-Shitaite” (Longing for the Shadow).



An iconic landmark with an impressive retro design

This iconic retro-style building was originally constructed as a missionary’s residence in the late Meiji Period (1868–1912) in Sendai City. It was relocated here in 1959, and later converted into a museum showcasing the history of Aone. On the first floor, there is a café where you can enjoy all the charming features of a traditional European-style house. The second floor houses an archive dedicated to Masao Koga, one of Japan’s most celebrated 20th-century songwriters and a recipient of the People’s Honor Award. Admission is free, so why not stop by, take a break and soak in the atmosphere of a bygone era?

Don’t forget to check out the lighting fixtures among other exquisite interior furnishings.



Aone Yokan (Archive for Masao Koga)

10-1 Aone Onsen, Kawasaki, Shibata District, Miyagi
Tel: 0224-85-3122
Hours: 10:00–17:00 (10:00–16:00 from November to March)
Café: 10:00–16:00 (L.O. 15:30) from April to October
10:00–15:30 (L.O. 15:00) from November to March
Closed on New Year’s Holidays (December 29 to January 3)



Follow the steps of the Date clan and historic authors in a classical building once dedicated to the lord

The Fubokaku was a spa for the feudal lords of the Date clan. The Aone Goten palace, located in the premise, is a National Registered Tangible Cultural Asset and now an archive room. Various invaluable items of the Date clan as well as materials from historic Japanese authors such as Yasunari Kawabata and Akiko Yosano are on display.

Aone Goten Fubokaku (Archive)

1-1 Aone Onsen, Kawasaki, Shibata District, Miyagi
Tel: 0224-87-2011

* Tours are only available to overnight guests.



Recommended
Nature

In Each Season of the Year, Aone Has Its Own Characteristic Beauty



Enjoy a walk in the forest and feel the energy and beauty of nature

It is believed that Masao Koga, one of Japan's greatest songwriters, turned away from suicidal thoughts when visiting this forest when he was young. The forest has now been developed into a park. Stand in front of the monument to Koga's masterpiece and be transported back in time as you listen to his big hit playing.



Aone Forest Park

Numanotaiyama, Maekawa, Kawasaki, Shibata District, Miyagi
(road closed from November to late April)
Tel: 0224-84-2111
(Kawasaki Town Hall Community Promotion Division)

Experience the grand landscape and the workings of nature with your own feet

If you follow the prefectural road from Aone Onsen to Gaga Onsen for 3 km, you will find Monomi-iwa (Observation Rock) placed on top of a 500-meter-long hiking slope. From this peak—located in the north, just opposite of the Zao Echo Line and the Takimidai—you can enjoy the superb landscape of Zao and Nigorigawa Gorge, known for its foliage in autumn.



Monomi-iwa

3 km from Aone Onsen on prefectural road 225
(road closed from November to late April)
Tel: 0224-84-6681 (Kawasaki Tourism Association)



An unbroken view of the north part of the Zao mountain range, stretching from north to south

When you descend from Monomi-iwa and head further toward Gaga Onsen, you will eventually reach Momiji-dai, from which you can marvel at northern Zao's peaks. This surprisingly unknown viewpoint is a place to enjoy the breathtaking scenery of the fall season, just as the name ("Momiji" means "crimson foliage") suggests.



Momiji-dai

4 km from Aone Onsen on prefectural road 225
(road closed from November to late April)
Tel: 0224-86-6681 (Kawasaki Tourism Association)



A fantastic natural light show illuminates Aone's early summer nights

From the end of June to early July, many tourists visit Aone Onsen to go for a walk on the promenade along the river and enjoy the fireflies that bathe the scenery here and there in their fascinating glow. Aone Onsen also hosts its very own firefly festival, "The Light of Aone." Feel free to enjoy a romantic walk at night, the specialty of Aone.

Hotaru-no-Mori (Firefly Forest)

12 Aone Onsen, Kawasaki, Shibata District, Miyagi
Tel: 0224-87-2611 (Ryusen)

Amazing natural illumination!



Recommended
Relaxation

Unravel Your Heart and Body in a Relaxing Bath



Enjoy the local, friendly atmosphere at the bathhouse with onsen that will revitalize your skin

In the local dialect, "jappo" means "bath." Since its opening in 2006, this public bathhouse has gained popularity as an exchange platform for locals and a hot-spring tourist spot for visitors. The building is made of Kawasaki wood, and the 100% natural hot spring has a reputation with female guests as the "beauty bath."



Jappo-no-Yu

9-1 Aone Onsen, Kawasaki, Shibata District, Miyagi
Tel: 0224-87-2188
Bath hours: 6:30-21:30 (entrance open until 21:00)
December-March 7:30-21:00 (entrance open until 20:30)
Bath fee: Adults (junior high school students and older) 400 yen,
Children (elementary school students) 200 yen, Preschoolers for free
Relaxation space hours: April-October 10:00-16:00, November-March 9:30-15:30
Relaxation space fee (incl. bath): Adults 800 yen, Children 400 yen, Preschoolers for free
<https://japponoyu.jp>



You'll be so relaxed you might just forget the time.

Two foot baths, each from a different source, will soothe your tired feet after a long walk

The two foot baths found in Aone Onsen, "Teishaba-no-Yu" and "Asahi-no-Yu," are ideal to refresh your feet when they are tired after a long walk. When you soak in the bath while enjoying the view or having a chat, your entire body will warm up gradually. Since these baths spring from different sources, we recommend trying out both.



Teishaba-no-Yu (Parking Lot Bath)



Asahi-no-Yu (Morning Sun Bath)



Teishaba-no-Yu (Parking Lot Bath) / Asahi-no-Yu (Morning Sun Bath)

Aone Onsen, Kawasaki, Shibata District, Miyagi
Tel: 0224-87-2188 (Jappo-no-Yu)

Recommended
Food

Delicious Foods Are Always Integral Part of an Unforgettable Journey



Check out the atmosphere, too!



A special flavorful dish crafted with expert skill using carefully selected aromatic soba

Soba (buckwheat) is one of Kawasaki's main products, and Kawasaki Soba is a popular specialty in the area. This restaurant's signature dish is *Juwari Soba*, or 100% buckwheat noodles, made only with stone-milled buckwheat flour and water. The noodles are rich in flavor and have a smooth texture. You can also enjoy their original *Kanzarashi Soba* here all year round.



Kawadotei
29-1 Ropozan, Maekawa, Kawasaki, Shibata District, Miyagi
Tel: 0224-87-2903
Hours: 11:00-16:00 (Soba served while supply lasts)
Irregular closure



Designed with a long corridor typically found in old schools in order to recreate the atmosphere of the former restaurant in an abandoned school building

The Okama pizza, overflowing with cheese, is famous all over the country

This pizzeria has moved to a new location across from its former home, with a design that closely resembles the original. Its signature dish is Okama Pizza, which gained nationwide fame after being featured on TV. These pizzas are made with high-quality flour and delicious toppings, including locally produced Zao cheese and home-cured house bacon. So good, there is often a line out the door.

Pizzeria Revoir
6-5 Matsubamoriyama, Maekawa, Kawasaki, Shibata District, Miyagi
Tel: 0224-86-4678
Hours: 10:00-16:00 (10:00-17:00 on weekends and national holidays)
Closed on Tuesdays (open for national holiday Tuesday and closed on the following day)



The second most popular pizza, after Okama Pizza, features honey as the topping. The honey is also available for purchase on-site.

Aromatic home-roasted coffee and delicious home-made sweets in the heart of a forest in Aone

This tiny cozy café, owned and run by a roaster trained in Tokyo, serves delicious home-roasted coffee, including its original blend Blue Marker. Enjoy the rich aroma and flavor with a home-made scone or other sweets made by the owner.



BLUE COFFEE
1-197 Matsubamoriyama, Maekawa, Kawasaki, Shibata District, Miyagi
Tel: 0224-87-2861 Hours: 11:00-18:00
Closed on Thursdays and Fridays (Open for national holidays falling on Thursdays and Fridays and closed on the following day)



Japanese tea shop in the midst of a beautiful forest

This is a tea shop specializing in Japanese tea, offering the *sencha* and *hojicha* varieties mainly from Shizuoka, along with sweets from around Japan to complement them. The menu also includes matcha parfait, matcha lattes, and Shizuoka-style oden.

Shizuku Cha
2-18 Teshirozukayama, Maekawa, Kawasaki, Shibata District, Miyagi
Tel: 0224-87-8438
Hours: 11:00-18:00 on Saturdays, 10:00-17:00 on Sundays
Closed from Monday to Friday
*Weekdays open by reservation only (2 or more persons)

Sweets shop located in the Aone forest. Only open on weekends



This shop, nestled in a serene forest, offers cookies and other baked treats in a variety of shapes and textures, in a fairy tale-like atmosphere.



Studio Fahren
4-27 Numanotaiyama, Maekawa, Kawasaki, Shibata District, Miyagi
Tel: 0224-87-8187
Hours: 10:00-17:00
Closed from Monday to Friday
<http://www.studio-fahren.com>
@studio.fahren

Experience the winds of Zao

Go hiking in the mountains!

Kawasaki is known as a "mountain town," as around 80% of its area is covered with forests and dense vegetation. With the Zao mountain range soaring over the town to the west, the stretch that encloses Sasaya Pass is known as Northern Zao, with Mt. Kamurodake (Sendai Kamuro and Yamagata Kamuro), and Mt. Ganto, Mt. Minamiganto, Mt. Kattadake, and Mt. Fubo, along the border with Yamagata. Beginners as well as advanced hikers are free to enjoy the wide variety of courses here with the seasonal flowers, the fresh mountain air, and, of course, the hot springs making it a most refreshing experience.



Zao Hiking Course Map



Trail (Beginner)
Trail (Intermediate)
Trail (Currently closed)
Trail (Outside the prefecture)
Starting point (Time)
Evacuation shelter

The summer hiking season in North Zao officially opens in mid to late May each year.



Safety tips for hiking in the Zao mountain range



Information boards are located at key points along the trail. You can submit your climbing registration form in the box placed at the bottom left of the board.

- Making a manageable hiking plan**
 Plan your route and equipment carefully, taking into account your age, physical condition, level of experience and other relevant factors to ensure a safe and manageable hike.
- Hiking in a group**
 Make sure to hike with others, as solo hiking may involve certain risks, such as getting lost due to taking a wrong path or delays in calling for help.
- Submitting a climbing registration form and informing family before hiking**
- Be sure to submit a climbing registration form. It provides essential information in case you get lost and need to be rescued. Preparing the form also helps you clarify your planned route, and check gear and food.
 - Inform your family or friends of your destination and your expected entry and exit times.
- * You can submit your registration form by email.

Equipment and food in case of unexpected circumstances

- Pack essential gear, such as cold-temperature and rain protection clothing, a flashlight, a map, a compass, a mobile phone, and emergency food rations.
- Choose your clothing carefully taking into account the weather and surrounding environment. Bright or easily visible colors are recommended.

Early decision-making for cancellation
 If the weather or your physical condition suddenly changes, discontinue your hike and turn back as soon as possible.

(Source: Miyagi Prefecture Hiking Information, Miyagi Prefectural Police)



The summer hiking season in North Zao officially opens in late May each year.



Okama—the symbol of Zao

Preparation points and rules for a hike

- Regularly develop your physical strength.
- Learn how to read a map and confirm your position using a compass.
- Create a hiking schedule with extra time.
- Carry enough water—according to the hydration guide: body weight × length of hike in hours × 5 cc).
- Confirm weather forecasts and cancel the hike in case of sudden changes.
- Always have one experienced hiker in the group.
- Avoid hiking by yourself.
- Leave a climbing registration form (date, route, number of people) in the box at the trail entrance.
- Only walk along the hiking route and keep both hands free in case you fall. Walking along rivers can be dangerous.
- Start the hike after visiting the bathroom or carry a portable toilet with you.
- Protect the alpine vegetation.
- Trash has to be carried back home.

How to walk

- Caution #1** Leave your weight on the pivot leg and only transfer the weight after you have made sure your next step is safe. **(Big rocks can also be unstable, and slippery slopes can be hidden under branches and leaves!)**
- Caution #2** Walk slowly and never run. **(Always have one foot on the ground!)**

Knowing how to walk is also important!



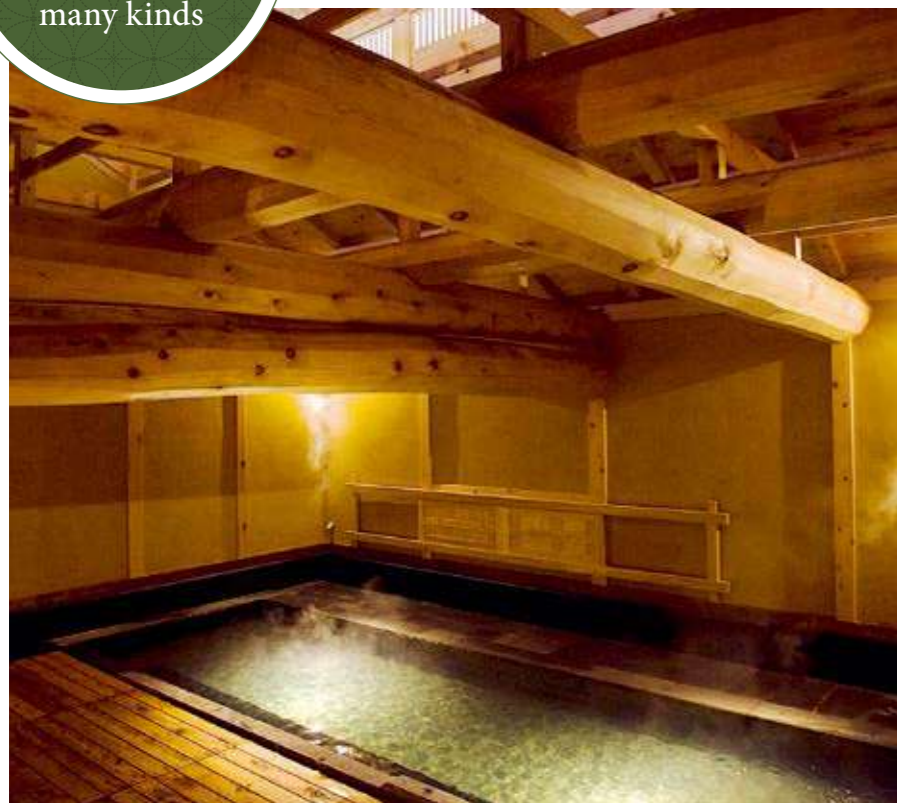
A Zao hiking route map is available. Inquire at the Kawasaki Tourism Association Tel: 0224-84-6681



Nostalgic onsen inns offering warmth of many kinds

Yumoto Fubokaku

Aone Onsen Area



Sankei-no-yado Ryusen

Aone Onsen Area



A 490-year legacy of hot springs beloved of major historical figures, including Date Masamune

This inn, Fubokaku (meaning “unforgettable pavilion”), was named by the famed warlord Masamune Date during one of his visits here, evidence of his deep, enduring fondness for the place. The inn’s elegance and historical significance can be seen and felt in every detail of the place, probably because it has welcomed many prominent figures over the centuries including other members of the Date clan and celebrated writers. The building houses six kinds of bath such as one set inside a mortar-walled storehouse and a stone tub in a beautifully crafted wooden structure. Traditional-style rooms offer the visitor a serene atmosphere. A total of seven structures—the main building, annex, gate, storehouse, and others—have been nationally registered as Tangible Cultural Properties. Among them is the Aone Goten palace, now serving as an archive that only hotel guests can explore on a guided tour by the *Okami* (the inn’s female manager).



1. Enjoy a lineup of culinary masterpieces, course meals made with healthy, local ingredients. Also enjoy seasonal hot-pot varieties (pheasant, boar, and deer). 2. Engulfed by silence, relax to your heart’s content in these Japanese-style rooms. 3. Tour around hot springs with different themes to wash away the everyday exhaustion.

Yumoto Fubokaku



ONSEN MEMO
Type: Simple spring (Hypotonic, mildly alkaline water)
Efficacy: Neuralgic rheumatism, hemorrhoids, convalescent recovery, stress relief, motor dysfunction, etc.

- 1-1 Aone Onsen, Kawasaki, Shibata District, Miyagi
Tel: 0224-87-2011
- Check-in: 15:00, Check-out: 10:00
- Baths: Oyu (main bath), Kurayu, Inosukenoyu (open-air), Gotenyu, Shinyu *Access for men and women alternates depending on the bath times for certain baths. Some baths can also be reserved.
- Facilities: 14 Japanese-style rooms, Aone Goten (with guided tour only), Kinsendo Lounge
- Fee: From 14,850 yen (incl. tax) per person per night with two meals *When staying with a group of two or more persons

In our Kura-yu (storehouse baths), our guests get to spend quiet, quality time making unforgettable memories. Don't forget to try our Oyu (large bath), which follows a long tradition in Aone Onsen.

Yumoto Fubokaku
Hidenobu Sato



1. For the banquet dishes, the chef displays his skills by using a wide range of local ingredients such as Sendai beef and Zao Misumi trout. 2. Rooms where you can relax and unwind. Out the window you have a breathtaking view of the mountain. 3. In this onsen, guests do not have to worry about post-bath chill and can count on its skin-refreshing qualities.

Sankei-no-yado Ryusen



ONSEN MEMO
Type: Simple spring (Hypotonic, mildly alkaline high-temperature water)
Efficacy: Neuralgia, muscular pain, arthritis, chronic digestive diseases, eye diseases, poor blood circulation, etc.

- 17-2 Aone Onsen, Kawasaki, Shibata District, Miyagi
Tel: 0224-87-2611
- Check-in: 15:00, Check-out: 10:00
- Baths: Main bath (one each for men and women), open-air bath (one each for men and women), private bath *Private open-air bath (50 minutes, Reservation required): Free for hotel guests. Bath fee plus 2,200 yen for day-use guests.
- Facilities: 16 Japanese-style rooms, souvenir store, restaurant, powder room, 2 banquet rooms, observation deck
- Fee: From 13,000 yen per person per night with two meals on weekdays Day bath use: From 5,000 yen per person with a meal, private lounge, and bathing kit. 800 yen per adult and 400 yen per child for bath use only.

We welcome our guests with the finest of hospitality that makes them feel the beauty of Aone's four seasons, expressed in both the dishes and the space. We also provide delicious sake from different places for a unique, thoroughly refreshing experience.

Sankei-no-yado Ryusen
Kumi Suzuki



❁ Kanzan Chogetsu ❁

Aone Onsen Area



1. The freshest ingredients, arranged in an authentic Japanese style. Decide on two dishes at check-in.
2. A free beverage, including beer, offered in the lounge.
3. Relax mind and body in ambient lighting.

Experience award-winning hospitality in this luxurious environment

This hotel, winner of the top prize in the first Ryokan Koshien (a national hotel competition in Japan), offers its guests a luxurious stay with exceptional hospitality and a wide range of thoughtful services. Its location is also a highlight—surrounded by an area of great natural beauty. From star-filled night skies and seasonal flowers to the adorable chirping of birds, a peaceful retreat has been created where guests can truly enjoy their own private time. All guest rooms are spacious and a blend of Japanese and Western styles, each equipped with a covered open-air bath, fed directly by natural hot spring water. After a soothing soak with panoramic views of the surrounding landscape, guests are treated to a seasonal dinner prepared by the head chef and served in the comfort of a private dining room.

Enjoy your exceptional time here, presented through our heartfelt hospitality that begins right from your welcome drink, and the beauty of the settings, in harmony with the seasonal beauty of nature.

Kanzan Chogetsu Manager (Okami)
Kaori Hara



Kanzan Chogetsu



ONSEN MEMO

Type: Simple spring (Hypotonic, mildly alkaline high-temperature water)
Efficacy: Neuralgia, muscular pain, arthritis, chronic digestive diseases, eye diseases, poor blood circulation, etc.

17-1 Aone Onsen, Kawasaki, Shibata District, Miyagi
Tel: 0224-87-2617

- Check-in: 14:00, Check-out: 11:00
- Baths: Guests are welcome to use the large bath and the open-air bath at our sister hotel Ryusen. A covered open-air bath in each room.
- Facilities: 7 Japanese & Western-style rooms, lounge, Aone Dining (private dining rooms)
- Fee: From 30,750 yen per person per night with two meals on weekdays

❁ Oyado Hanabusa ❁

Aone Onsen Area



1. Half-buffet style dinner with a choice of main dish, and free beverages for 24 hours 2,3. Saunas were newly installed in September, 2023: Finnish-style dry sauna for men, and mist sauna effective for skin moisturization for women.

All-inclusive onsen inn with an overlook of Mt. Hanabusa from a soothing open-air bath

This modern Japanese style hotel stands in a prime location with stunning views of the area's iconic Mt. Hanabusa. It operates on an all-inclusive system, where the accommodation fee covers all beverages including alcoholic drinks. Meals, carefully crafted by the hotel's chef using fresh seasonal ingredients, consistently receive high praise from guests. Guest rooms come in three styles, all equipped with beds, allowing hotel staff to minimize disruption to your stay. The highlight of the experience here is the open-air bath—a blissful soak with breathtaking views of Mt. Hanabusa that you will never forget.

Our hotel is right at the foot of Mt. Hanabusa, where you can enjoy the beauty of all four seasons. After enjoying the open-air bath with a great view, feel free to relax in our lounge with free beverages including alcoholic drinks and snack.

Oyado Hanabusa General Manager
Kaori Hara



Oyado Hanabusa



ONSEN MEMO

Type: Simple spring (Hypotonic, mildly alkaline high-temperature water)
Efficacy: Neuralgia, muscular pain, arthritis, chronic digestive diseases, eye diseases, poor blood circulation, etc.

7-5 Aone Onsen, Kawasaki, Shibata District, Miyagi
Tel: 0224-87-2411

- Check-in: 14:00, Check-out: 10:00
- Closed days: None
- Fee: From 19,860 yen per person per night with two meals on weekdays
- Day-use: Only certain days
- Parking spaces: 20
- Open-air bath: One each for men and women
- Lounge: 2 massage chairs and free beverage service including alcoholic drinks

Ittou-Onsenyado Seigetsu

Aone Onsen Area



1. Private hot spring water, blissfully undisturbed. 2. A prime location with views of the beautiful Aone mountains 3. Access PIN provided at the time of booking

Unpretentious and peaceful—a place to truly relax

Seigetsu is a villa that can be reserved by just one group per night. Located away from the hustle and bustle of the city, it offers a peaceful retreat where guests can enjoy uninterrupted time while taking in the seasonal beauty of the surrounding forest. A soak in the high-quality hot spring water in the bath gently relaxes both body and mind. Due to the tranquil setting, guests may feel as if they can hear not only the subtle sounds of running water and light breezes, but also the shimmering presence of the moon and stars. It's a special and unforgettable experience that can only be found here, shared with the people you love. Seigetsu has also renovated the long-closed communal bath Myogo-no-yu, which has now reopened as a private bath available by reservation only. For more information, please visit the Seigetsu website.

Ittou-Onsenyado Seigetsu



ONSEN MEMO

Type: Simple spring
(Hypotonic, neutral, high-temperature water)
Efficacy: rheumatoid arthritis, osteoarthritis, lower back pain, nerve pain, autonomic dysfunction, insomnia, etc.

2-1 Aone Onsen, Kawasaki, Shibata District, Miyagi
Tel: 090-6009-0762

- Bath: Covered open-air bath
- Rooms: 1 bedroom, 1 Japanese & Western-style room, 1 Japanese-style room, study area
- Fee: From 31,000 yen (incl. tax)
- Facebook

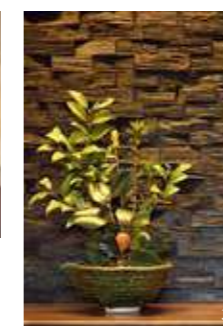
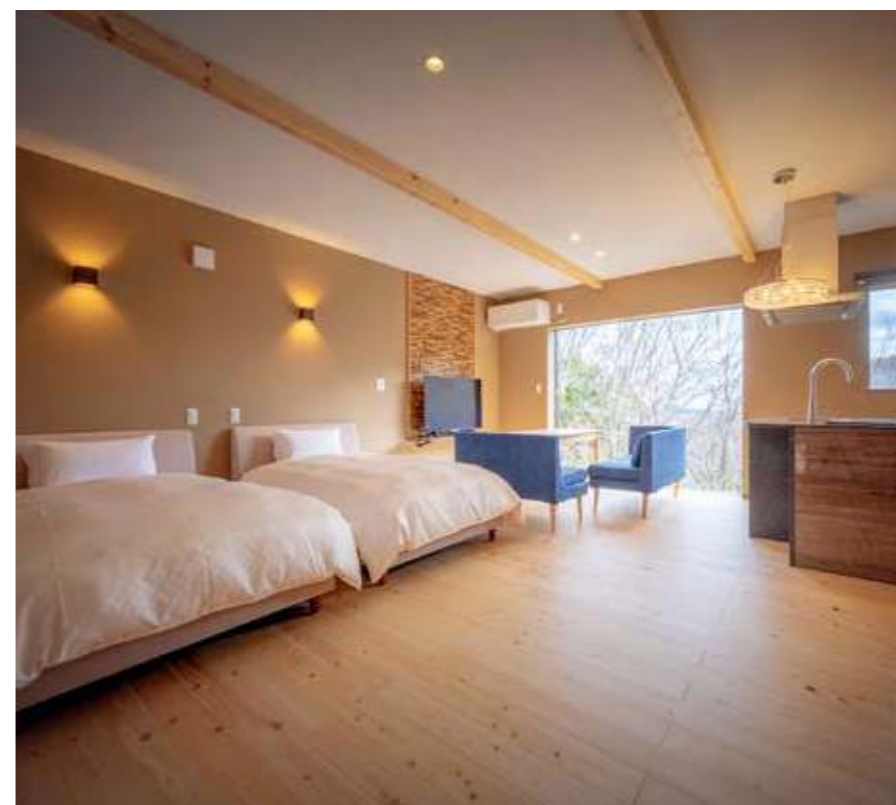
<https://m.facebook.com/aoneonsenseigetsu/>
*To make reservations for Myogo-no-yu, visit the Jalan website and search for this villa in Aone Onsen.

This villa was originally a house built over 100 years ago and has since been turned into a modern-style retreat. We hope our guests enjoy the charm of the historic ambiance that remains, from the gentle creak of the old wooden floors to the warmth you can feel beneath your feet, all surrounded by peaceful nature.

Ittou-Onsenyado Seigetsu
Taichiro Hara

Hitohikari

Aone Onsen Area



1. An open-air like experience due to the bathroom's large picture window. The water is a blend of 6 natural springs out of 7 from this area. 2. Laundry facility is convenient for a stay of more than one night. 3. Touches of great hospitality can be seen throughout the villa, like fresh flowers in the room.

A modern hot-spring inn surrounded by the magnificent Aone nature, only available for two persons per night

This one-story villa is exclusively available to a single party of two guests per night. The spacious 73 m² interior features a single large room with an island kitchen, dining area, two beds, and a large picture window offering beautiful seasonal views. Banquet dishes can be catered on request by Ryusen, the villa's sister accommodation known for its exceptional cuisine. The bath here is fed directly by a natural hot spring, offering a completely private and relaxing experience, enhanced by stunning seasonal scenery and deeply soothing waters.

Hitohikari



ONSEN MEMO

Type: Simple spring
(Hypotonic, mildly alkaline high-temperature water)
Efficacy: Neuralgia, muscular pain, arthritis, chronic digestive diseases, eye diseases, poor blood circulation, etc.

2-1 Aone Onsen, Kawasaki, Shibata District, Miyagi
Tel: 090-6009-0762

- Office hours: 9:00-18:00
- Check-in: 15:00, Check-out: 10:00
- Closed days: Irregular
- Fee: From 30,700 yen (incl. tax)
- Day-use: Not available
- Parking space: 1

We provide a relaxing and comfortable stay, complete with stylish amenities. We hope you'll choose this beautiful villa for that special occasion, whether it's a celebration or simply a peaceful getaway with someone you love.

Hitohikari
Taichiro Hara

Fubokan Okazakiryokan

Aone Onsen Area



1. Stunning views of Aone through the windows of the inn— even more exceptional when enjoyed from the comfort of a warm bath. 2. The rooms, as well as the hallway, lobby, and other places in the inn, are reminiscent of the good old days of Japan.

Entrust your body to the “Rejuvenating Spring” and relax your mind and body

Aone Onsen is well-known for its abundant flow of what is often called “rejuvenating water” thanks to its positive effects on the skin. This inn features a large communal bath with scenic natural views, as well as two private baths—all fed by water from this high-quality local spring. All baths are accessible to guests at any time during their stay. The hotel is made up of a main building and two annexes (South and North). The annexes, completed in 1926 and now nationally registered as Tangible Cultural Properties, retain the refined elegance of that era. Guest rooms are simple yet comfortable, offering a peaceful retreat for guests seeking rest and relaxation.

Fubokan Okazakiryokan

8-5 Aone Onsen, Kawasaki, Shibata District, Miyagi
Tel: 0224-87-2016

ONSEN MEMO
Type: Simple spring, Weak alkaline simple spring, Sodium spring
Efficacy: Neuralgia, arthritis, rheumatism, etc.

- Check-in: 15:00, Check-out: 10:00
- Baths: A large communal bath, 2 private baths
- Facilities: 7 Japanese-style rooms in the annexes (The main building closed at present)
- Fee: 6,000 yen with no meal
- Day-use: 500 yen for bath only, 1,500 yen for bath and short-stay, 1,000 yen for private bath

In a simple touch lies warm beauty. In exchange for the daily conveniences of the city, this ryokan can offer a rare experience. We are waiting for your visit.

Fubokan Okazakiryokan
Kentaro Okazaki



Gaga Onsen

Gaga Onsen Area



1. Local cuisine made with regional ingredients such as Hitomebore rice grown by experts and vegetables harvested from Zao's fertile soil. 2. The establishment opened over one hundred years ago. There are multiple ways to enjoy the historic Gaga Onsen experience: pouring hot water over your body, entering the bath, and drinking the spring water. 3. Guest rooms are available to single visitors as well as groups.

Immerse yourself in relaxing “Gaga time,” away from urban hustle and bustle

If you leave the Aone area and follow the pass through the heart of Zao's mountains, you will end up at the hidden hot-spring hotel Gaga Onsen. Away from mobile phones and the big-city stress, this is where guests can experience extraordinary “Gaga time,” allowing them to enjoy rich nature and highly effective baths. The gushing natural source for the hot spring, together with the Shima Onsen in Gunma Prefecture and the Yunohira Onsen in Oita Prefecture, is one of the three major hot springs that have a soothing effect on your stomach and intestines. Drinking the spring water is also said to straighten out your stomach again. The establishment has so much to offer that one may even feel that one night is not enough—with an open-air bath that overlooks a beautiful gorge, large baths with different temperatures (hot and warm), and an original bedrock bath made with heated, natural ore.

Gaga Onsen



ONSEN MEMO
Type: Sodium-, calcium-, hydrogen carbonate, sulfate spring
Efficacy: Neuralgia, rheumatism, liver disease, other digestive diseases, etc.

1 Gaga, Maekawa, Kawasaki, Shibata District, Miyagi
Tel: 0224-87-2021

- Check-in: 15:00, Check-out: 10:30
- Baths: Separate open-air baths for men and women, open-air bath shared by men and women, large communal bath (warm water/hot water), private open-air bath, bedrock bath
- Facilities: 13 Japanese-style rooms, 4 Japanese & Western-style rooms, lounge, bar
- Fee: From 20,000 yen (incl. tax) per person per night with two meals

Please enjoy our spa luxuries that are gentle on your skin and stomach. We recommend a two-night or more stay to fully enjoy a luxurious resort time where you can thoroughly ease your heart in the woods.

Gaga Onsen
Hiroyuki Takeuchi





AONE×MATKA

Aone Onsen Area

Private camp base



1. The main building of the facility was once a branch of the former Maekawa Elementary School.
2. The café area boasts stunning views of summer greenery and autumn leaves from the windows.
3. The "school yard" is turned into a camp site. Camp fires are available too!
4. Camp experts offer interesting lectures on outdoor activities.
5. The "music room" has been renovated in a Finnish design to be used for meetings and self-study.
6. All the "classrooms" are available for various events and workshops.

A reservation-only camping facility offering a new style of outdoor experience

This unique camping facility, named "A-one" meaning "the best" in English and "Matka" meaning "journey" in Finnish, offers a wide range of outdoor activities including camping, all supervised by staff members qualified in outdoor activities and childcare. They are based in the stylish main building featuring Finnish-inspired design, and are available to assist guests on-site at all times. The place's primary goal is to help children develop essential life skills, both physically and mentally, through fun and unforgettable times. These include exciting outdoor activities, overnight stays, and seasonal events, all set in the stunning natural surroundings of Aone. Adults are also welcome to unwind and recharge their batteries through enriching and relaxing experiences, making it an ideal getaway from the demands of everyday life.

AONE×MATKA

3-7 Myogoshitayama, Maekawa, Kawasaki, Shibata District, Miyagi
 Tel/Fax: 0224-86-5331
 E-mail: matka@kits-no-mori.com
 ■ Reception hours: 9:00-18:00
 If we are not available to answer your call, please leave a message, and we will get back to you as soon as possible.
 If it's urgent, feel free to email us.
 ■ Operational hours: One-day visit 10:00-15:00
 Camping 15:00-10:00



T-lodge AONE

Aone Onsen Area



1. Living room and kitchen on the first floor, with a large window leading to a spacious balcony
2. Wooden log house surrounded by forest
3. Natural hot spring water bath overlooking lush greenery through large windows
4. Spacious balcony surrounded by trees—perfect for enjoying birdwatching up close
5. Main bedroom situated upstairs for a quiet relaxing evening
- 6.7. Special dining experience surrounded by the natural environment. (No meals are available or offered.)

Rent a whole lodge for a weekend to experience a special "vacation-home" lifestyle

Take a stroll through the forest to a cozy coffee shop, spend a whole afternoon on the balcony immersed in a novel, or raise a glass with friends as you reflect on your latest golf scores—this private lodge is available as a sole rental for you to enjoy a casual vacation-home lifestyle with friends or family. Surrounded by a tranquil forest, this wooden retreat features a large, luxurious bath made of Towada stone, filled with natural hot spring water. You may wish to savor dining on a homemade meal with your family or fire up the barbecue with friends—it's really up to you. However you choose to spend your time, waking up to the sound of birdsong is an experience you won't want to miss and will not easily forget.

T-lodge AONE

3-17 Ropozan, Maekawa, Kawasaki, Shibata District, Miyagi
 Reservations
 Tel: 080-800-6827 (Weekdays 9:30-17:00)
 Website: <https://airbnb.com/h/t-lodgeaone>
 ■ Fee: From 24,200 yen (incl. tax)
 Max: 6 persons (additional fee applied for a group of 5 or 6)
 No meals are offered. Please feel free to bring your own food and make use of the kitchen facilities and utensils.



❁ T-lodge AONE 2 BIGFOOT ❁ Aone Onsen Area



1. To enter the lodge, simply use the pin number you receive on reservation.
 2. A 2-story building with a loft and a double bed on the first floor.
 3. Outdoor barbecues can be enjoyed even on rainy days due to the covered deck.
 4. A twin bedroom on the second floor with an additional two beds in the loft.
 5,6. Well-cleaned woody rooms made with timber from the North America.
 7. Designed for up to four people, but can accommodate up to six due to the ample living space.

An impressive log house with all modern comforts and a truly relaxing atmosphere

This authentic hand-cut log house was introduced by a travel agency that truly understands the joy and essence of travel. It has an inviting, relaxing atmosphere making the most of the warmth of wood, which is used everywhere down to the smallest detail. On the first floor, there is a spacious covered deck where you can enjoy a fun barbecue using your own charcoal grill. However, an authentic American-made barbecue grill is complementary for guests staying for two nights or more. Another outstanding feature is the large granite bathtub, filled with 100% natural hot spring water straight from the source, which will soothe your body to the core. If you want to fully enjoy a true nature experience, a stay of at least two nights is highly recommended.

T-lodge AONE 2 BIGFOOT

1-17 Ropozan, Maekawa, Kawasaki, Shibata District, Miyagi
 Tel: 080-800-6827 (Weekdays 9:30-17:00)
 Website: <https://airbnb.com/h/t-lodgeaone>
 ■ Fee: From 35,000 yen (incl.tax)
 Max: 6 persons (additional fee applied for a group of 5 or 6)
 No meals are offered. Please feel free to bring your own food and make use of the kitchen facilities and utensils.



❁ N-cabin AONE ❁ Aone Onsen Area



1. Max. 8 people, but up to 5 people recommended.
 2. Numerous windows offer magnificent views of nature from all rooms.
 3. An outdoor terrace to enjoy delightful birdsong behind lush greenery.
 4. Natural alkaline spring water from Hinotsukayama.
 5. Two bedrooms on the second floor. Futons are also available.
 6. Bedrooms have windows overlooking stunning views of nature.
 7. A counter table and chairs offering exclusive views of the great outdoors.

A relaxing, stylish lodge surrounded by the natural environment

Nestled in lush greenery, this stylish wooden lodge is the perfect place for a relaxing getaway, with exceptional features that include a cozy living room, a spacious outside terrace and a functional island kitchen. The rooms are thoughtfully designed with plain white walls and well-placed furniture to highlight the stunning seasonal views through the large windows. There are many ways to spend time in this warm, homely atmosphere, such as cooking with friends in the kitchen or lounging on the terrace with a delicious drink or a cup of coffee. You can also unwind in the lodge's bath that is fed by natural hot spring water. Surrounded by large windows, you'll feel as though you are bathing in the open-air.

N-cabin AONE

3-306 Ropozan, Maekawa, Kawasaki, Shibata District, Miyagi
 Tel: 080-800-6827 (Weekdays 9:30-17:00)
 Website: <https://airbnb.com/h/t-lodgeaone>
 ■ Open all year
 ■ Fee: From 35,000 yen (incl.tax)
 Max: 6 persons (additional fee applied for a group of 5 or 6)
 No meals are offered. Please feel free to bring your own food and make use of the kitchen facilities and utensils.



HANABUSA DOGlamping

Aone Onsen Area



Unique glamping experience with your "family"

This is a new type of glamping site where you can enjoy a holiday with your furry friend or family member. Each accommodation plot includes a spacious glamping dome and a large, leash-free play area for your dog to run freely. The area is covered with dog-friendly cushioned artificial turf that helps to keep your dog's paws clean. Next to the dome is a cabin equipped with a kitchen and a refrigerator. If you choose a meal plan, ingredients for a barbecue, including beef sirloin and tongue, are provided. Guests can also enjoy natural hot spring baths at the hotel adjacent to the site.

1. A large play area, perfect for all sizes of dog. Amenities for dogs are also available. 2. Four doglamping plots are truly magnificent. 3. Views of the surrounding nature from the high-ceilinged spacious dome are truly magnificent. 4. The covered cabin allows for outdoor barbecues come rain or shine. 5. A fire pit is available for rent. 6. The meal plan includes food for your dog (two servings).

HANABUSA DOGlamping

7-7 Aone Onsen, Kawasaki, Shibata District, Miyagi
Tel: 0224-87-2411

- Check-in: 14:00-17:00, Check-out: 10:00
- Closed: December to mid March
- Fee: From 27,500 yen per night per person with two meals
* If you bring two or more dogs, an extra charge of 2,000 yen for each extra dog is applied.
- Capacity: Up to 4 people, and up to 3 dogs per dome
- One parking space per dome
* The meal plan includes two servings of food per dog. You can also bring your own dog food.



Aone & Gaga Map

- National road
- Prefectural road
- 🔥 Onsen / Ryokan
- 🏠 Onsen / Ryokan (day-trip bath available)



Model Courses

Model Course 1 - by Car

Lunch at Revoir (5 minutes by car) → Coffee break at BLUE COFFEE (15 minutes by car) → Bathe in the green of Aone Forest Park → Head to your accommodation

Model Course 2 - by Bus

Get off at "Aone Onsen" → Walk for 3 minutes → Lunch at Ryusen → Walk for 5 minutes → Coffee break at Aone Yokan → Walk for 30 seconds → Relax at Teishaba-no-Yu footbath → Head to your accommodation



Bring Back a Piece of the Aone Flavor



Sasadango, Kawasaki's specialty, comes recommended when taking a break from a walk or choosing a souvenir. The soft rice cakes enriched with a bamboo aroma and red bean paste go together like bread and butter. The delicious taste will have you coming back for more.



Suga Bussan-ten

3-1 Aone Onsen, Kawasaki, Shibata District, Miyagi
 Tel: 0224-87-2402
 Hours: 8:30-16:00
 (8:30-17:00 on weekends)
 Open all year

This is a new favorite shop for the locals, located behind the Jappo-no-Yu public bath. It offers the freshest vegetables straight from local farms. Seasonal fruits such as peaches, pears and apples produced nearby are very popular due to their sweet, rich taste.



Aone Onsen Miharashi Store
 3-11 Aone Onsen, Kawasaki, Shibata District, Miyagi
 Tel: 0224-87-2605 Hours: 9:00-17:00
 Closed irregularly, and completely closed throughout the winter months.



Access to Aone Onsen

JR Tohoku Shinkansen (bullet train)

From Shiroishi Zao station:
 Take the Miyagi Kotsu bus to Togatta Onsen and get off at the last stop (50 minutes), then it takes 6 minutes by car.

Yamagata Expressway

Leave the expressway at the Miyagi Kawasaki IC and follow national road 457 for 15 minutes.

Tohoku Expressway

Leave the expressway at the Shiroishi IC and follow prefectural road 12 for 40 minutes.

* Some hotels operate pickup buses.
 Please inquire at your hotel.

